

# LV JUICE

# THERMO CLIP™ OVER-TEMPERATURE INDICATOR

These easily-installed colour-changing clips help **reduce downtime** after a failure by providing a quick visual indicator of failed connections.

Thermo Clips™ work as part of the **visual component in the inspection process** prior to and between infrared and ultrasound inspections. With a memory-effect feature, these non-conductive clips can also let inspectors see a **permanent record of over-temperature excursions** in intermittently loaded systems.

### SIMPLE APPLICATION

Easy and quick push-on installation means no de-energising or disconnection needed.

### EASY TO READ

The thermochromic material provides a highly-visible predictive warning when viewing through inspection windows.

### BROAD COVERAGE

Multiple models available to provide for varying wire sizes 2.3-31 mm diameter. Suitable for circuits rated 3-600 V AC or V DC.

CLIPS  
PERMANENTLY  
TURN PINK WHEN  
EXPOSED TO OVER-  
TEMPERATURE



## This Month

- TRIED & TRUSTED RESIN KITS PAGE 3
- ALL YOUR STREETLIGHT CONNECTION NEEDS PAGE 4
- NEW DOUBLE-SIDED PORTABLE LIGHTS PAGE 6

**FREE** PACK OF LOLLIES  
**WHILE STOCKS LAST** (ASSORTED)

When you spend  
over \$400 (+GST)  
on one invoice  
this month



www.transnet.co.nz



TE's ANC Connectors can be installed on all service cable types such as stranded, solid, aluminium or copper. The molded orange insulation shrouds offer reliable and robust insulation thus reducing

## FEATURES AND BENEFITS

- Suitable for both copper and aluminium conductors
- Branch connection can be made without cutting the existing main cable
- Quick and easy to install molded insulation shroud

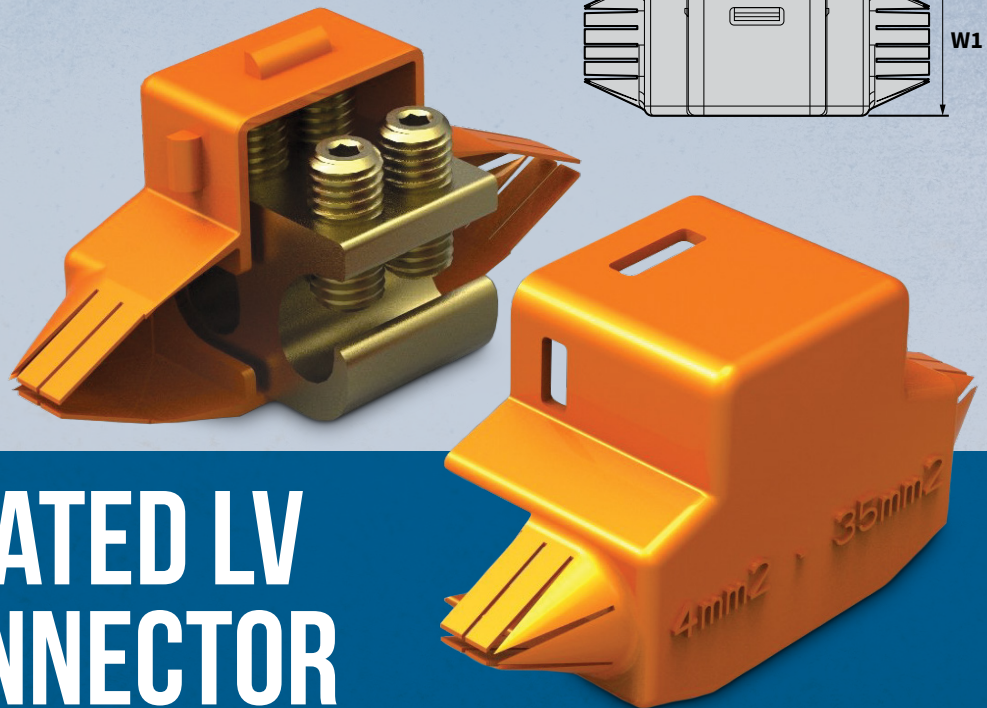
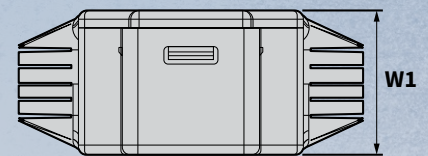
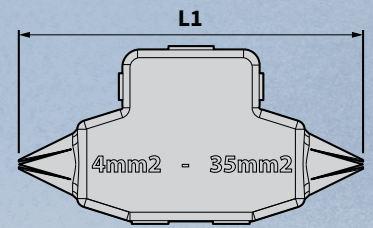
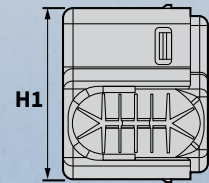
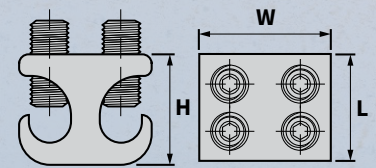
Cat No.	Dimensions (mm)						Installation Tool	Cable Size (mm <sup>2</sup> )
	L	H	W	L1	H1	W1		
ANC35INS	22	23	27	76	38	32	3MM ALLEN KEY	4-35

installation time and making live working easier and safer.

This branch connector has molded insulation shrouds for service conductors.

## STANDARDS

- Connector tested to ER C79
- Molded insulation shroud tested to 5kV AC and 1 kV DC



AUTHORIZED DISTRIBUTOR

# ANC - INSULATED LV BRANCH CONNECTOR

## TRANSNET MONTHLY GIVEAWAY SUPPORTING KIWI BUSINESSES

This month's giveaway comes from a real family business with a great story behind it. The current owners of the LollyShop in Christchurch used to visit it with their children for special events, so when the opportunity came up to buy

it they already had a strong connection with it! Now the whole family has gone from buying to selling delicious locally made lollies for us to enjoy. We've chosen a mix of classic fruity flavours for our

<https://lollyshop.co.nz/>

giveaway this month, so no matter what your favourite is you'll find there's a bit of something in there for everyone!





## PXE - LV RESIN STRAIGHT JOINT KITS

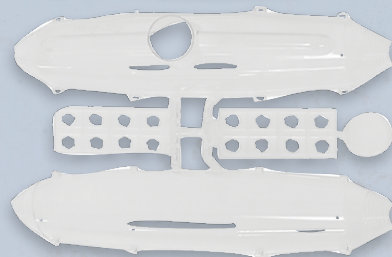
Resin filled joints for armoured and unarmoured cables up to 1kV.

The PXE range of LV Resin Joints from TE Connectivity caters for most common types and sizes of power distribution and control cables. The straight arrangements accommodate most conductor connection methods.

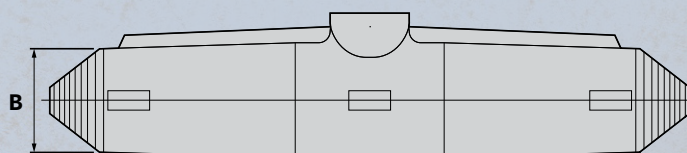


### FEATURES

- Joint Insulation, sealing and mechanical protection provided by proven two-part polyurethane resin
- Supplied in convenient foil packs
- Range-taking joint kits with few components for quick and simple installation
- Clear, robust, snap-together joint shells for easy positioning and filling
- Choice of kits with or without screw connectors for Copper and Aluminium conductors
- Core separator included to ensure adequate clearance between conductor connectors
- Earth bonding components included in kits for armoured cables
- Cable joints that comply with VDE standards
- Abrasive cloth, sealing tape and protective gloves included in the kit
- Performance tested to European standard EN 50393



Cat No.	Cable Conductor Size Max (mm <sup>2</sup> )		Cable Entry Dia. B (mm)
	2 & 3 Core	4 Core	
PXE-SU1	10	6	6-19
PXE-SU2	25	10	6-27
PXE-SU3	35	16	14-34
PXE-SU4	50	25	16-37
PXE-SU5	70	50	20-44



AUTHORIZED DISTRIBUTOR



# EVERYTHING YOU NEED FOR STREETLIGHT CONNECTIONS

**CUSTOM OPTIONS AVAILABLE**



## FUSED STREETLIGHT BOARD

Light poles are classified as an 'electrical installation' under electricity regulations, meaning they carry highly specific legal requirements in relation to earthing, protection and isolation devices.

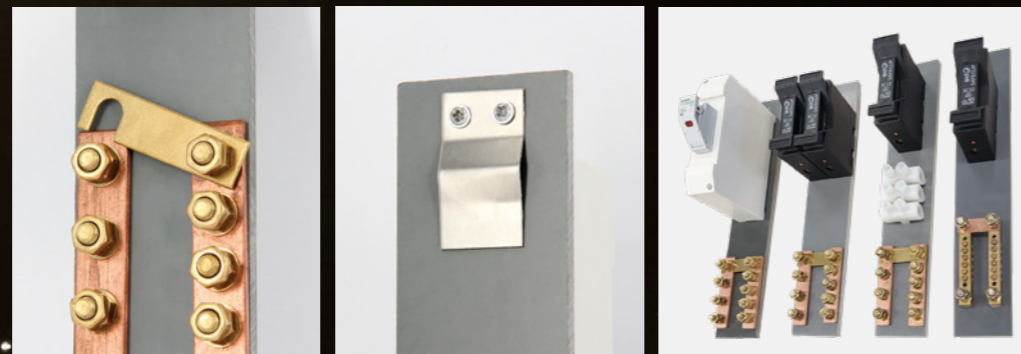
"An electrical installation needs an isolating device, formal protection, an earth neutral bar, and an earth stay," and the TNSPLKIT is just the answer!

If you have specific requirements we can help! Contact us about designing a specific streetlight board to suit your needs.

### FEATURES

- Removable MEN link
- Fuse carrier includes 6A 10x38mm barrel fuse link
- Noark fuse carrier meets requirements of IEC/EN 60947-3
- All brass electrical connections
- Rated to 32A
- Stainless steel spring loaded mounting hook
- Dimensions: 285H x 50W x 90-110D\* (mm)
- Fuse carrier terminal capacity 1-25mm<sup>2</sup>

\*90mm closed, 110mm open



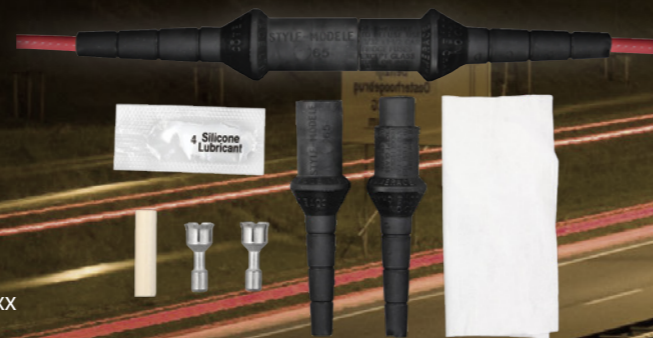
Cat No. TNSLPKIT

## 65U FUSE CARRIER

Designed for lighting applications, the 65U is fully submersible and perfect for lighting installations. The rubber housing is easily adjusted to fit a range of conductor sizes. This fuse carrier is simple to use, just push the two halves together to create a friction seal. Compression style installation is required.

### FEATURES

- 10x38mm barrel fuse
- Watertight
- 30 Amps
- Cable range 2.5-16mm<sup>2</sup>
- Fuse Link Cat No. = CH10-NB0xx (xx denotes amps)



## TE'S GELCAP SL

The Gelcap SL Splice Kit provides quick installation, dependable performance and easy re-entry for street lighting connections and more. Packed with revolutionary PowerGel sealing gel, it offers a superior moisture seal over a wide conductor range.

### FEATURES

- Temperature range -40°C to 105°C
- Cap is UV stable, insulating and offers excellent abrasion protection
- Simple Allen Key fastening
- Range Taking Connector 2 x 2.5mm<sup>2</sup>-70mm<sup>2</sup> and 1 x 2.5mm<sup>2</sup>-10mm<sup>2</sup>
- Two bolts in tap hole
- No extra materials or greases are required



Cat No. 2-361372-1



## FD150-1-NZ SINGLE PHASE STREETLIGHT CUTOUT

This Charles Endirect cutout is strong, durable, easy to install, and meets the full requirements of BS 7654. Featuring a secure and quick release carrier to provide safe and easy access to fuses and outgoing terminals.

With safety at the forefront of the design process, the special cam operated fuse handle ensures electrical disconnection is achieved before the unit is opened and the fuse carrier extracted.

### TECHNICAL SPECIFICATIONS

- Single pole isolation
  - Single fuse (BS 88 Part 1, AC 16 tag type)
  - 25A max fuse rating
  - Electroplated brass terminals with serrated bores for better cable retention
  - PVC grommets at cable entry points
  - Designed and tested in accordance with BS 7654: 1997
  - Outgoing cables exit below horizontal to ensure drip loop is formed
  - IP22 rated
  - Sealing wire facility
  - Max cable size is 10mm<sup>2</sup>
- \*Two pole double fuse option available

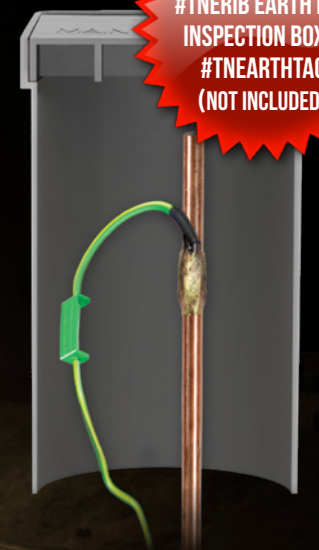


## COMPLETE EARTH FOR STREETLIGHT POLES

### TNSLGR3 FEATURES

- 13mm copper bonded rod
- Pre-welded
- 3m of 10mm<sup>2</sup> cable attached
- Cadweld and copper conductor included
- Able to be buried
- Position of the weld allows driving tip
- Room under ground for connection
- ERICO rod 1840mm long

**PICTURED WITH #TNERIB EARTH ROD INSPECTION BOX & #TNEARTHAG (NOT INCLUDED)**



Cat No. TNSLGR3

**VIEW THE ECOLIGHT STREETLIGHT RANGE**





# EXIN LIGHT INDUSTRIAL

## PORTABLE LIGHTS FOR INDUSTRIAL & EMERGENCY APPLICATIONS

These tough and reliable long run time (up to 28 hours) portable lights are suitable for a wide range of commercial and industrial activities. The patented lights are fully self-contained in a weatherproof unit and are battery powered; always ready-to-go in quick response situations. The built-in cable storage compartment and height-adjustable arms add even more convenience. No plugs or cables are needed while operating which also avoids trip hazards. Zone 0 intrinsically safe variations available.

CAT NO.	IN1600L DS	IN1600LBS
Net Weight	7.95KG	11.3KG
Gross Weight	9.05KG	12.6KG
Open Height	1150MM	
Closed Height	582MM	
Width	335MM	
Depth	222MM	
Charging Voltage	100-240V AC/12C DC	
Light Type LED	DOUBLE SIDED	
Lumens (lm)	1600 (EACH SIDE)	
Battery Run Time (hrs) approx.	1 SIDE: 16-18 2 SIDES: 8-10	1 SIDE: 28-30 2 SIDES: 16-18
Battery Charge Time (hrs) approx.	7-8	10-12

TILTING LIGHT HEAD - LIGHT HEAD CAN BE TILTED FORWARD

POWER SAVING, VERSATILE LIGHT HEAD WITH ONE OR TWO SIDED OPERATION, HIGH-LOW FEATURE AND A FLASH MODE

SOLID CONSTRUCTION MADE OF AUTOMOTIVE TYPE ABS747

BUILT-IN STORAGE COMPARTMENT FOR CHARGING CABLES

BATTERY & BATTERY CHARGE INDICATOR

NON-MARKING SHOCK ABSORBING RUBBER



Up to approximately  
**28 HOURS OF CONTINUOUS RUN TIME**

AIRCRAFT GRADE ALUMINIUM





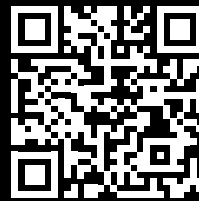
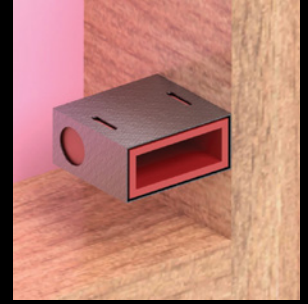
## PASSIVE FIRE PROTECTION

### Acoustic Fire Pad

Acoustic fire pads are non-setting intumescent putty sheets designed to be a cost-effective and efficient method of firestopping electrical sockets in dry wall fire-rated partitions.

#### FEATURES

- **Acoustic rated with weighted sound reduction index of 65 in accordance with EN/ISO 7171-1**
- Up to 2 hours fire protection installed internally, up to 1 hour installed externally
- Simple to install
- Suitable for most drywall applications
- Tested to AS1530.4-2005 & AS4072.1-2005
- Tested back to back
- Sound Transmission Class: 60
- No health, spill or environmental hazards
- Rot proof, do not sustain vermin, and will not encourage the growth of fungi, mould or bacteria
- Can be fitted around the outside of a metal TransNet flush box to achieve both an Acoustic and Fire rating



### VIEW THE RANGE



## LV "TIGER TAIL" LINE COVER



**Cat No. DB.35A**  
2.5m LONG x 35mm ID, BLACK/YELLOW



balmoral™  
engineering

### TIGER TAIL

Also known as line cover, Tiger Tails provide temporary electrical insulation, mechanical protection and visual warning of power lines and conductors. Used by utilities and electrical contractors, these robust units have decades of engineering and development to ensure the highest quality and safety standards. Made from HDPE plastic with a mechanical interlock fastening system. Certified AS4202, Class I and voltage rated 650V.



# RUG UP IN STYLE WITH NZ WOOL

## Arc Rated Merino Base Layers



### Auckland

78 Cryers Road  
East Tamaki  
Auckland  
NEW ZEALAND  
Ph 0800 442 182  
PO Box 39 383  
Howick, Auckland

### Wellington

10 Petone Ave  
Petone  
Wellington  
NEW ZEALAND  
Ph 04 576 2530  
PO Box 39 383  
Howick, Auckland  
NEW ZEALAND  
sales@transnet.co.nz

### TransNet Tonga

#### Nuku'alofa

Lakalakaimonu Multi Utility  
Complex  
Taufa'ahau Road  
Poutaha  
Nuku'alofa  
TONGA  
Ph +67 627 939  
PO Box 2932  
Nuku'alofa  
TONGA  
transnet@kalianet.to

## ATPV 4.2cal/cm<sup>2</sup> Arc Rating - Available Now



These superior quality garments are designed for the workplace and offer ultimate comfort and durability. Merino wool provides natural warmth, breathability, and temperature regulation, and is blended with FR treated Viscose.

### Features

- High quality 50% Merino Wool / 50% FR treated Viscose fabric sewn with FR thread
- ATPV 4.2cal/cm<sup>2</sup> Arc Rating
- Size options from s-3XL
- HRC1 labels are sewn into each garment
- Machine washable & quick drying



### Compliance & Standards

#### AS/NZS 1906.4:2010

Hi Visibility material for Safety Garments

- Class D: Daytime use

Durability

- AS 2001.4.15:1994 - Determination of Colourfastness to Washing
- AS 2001.4.E04:2005 - Determination of Colourfastness to Perspiration
- AS 2001.4.B02-2001 - Colourfastness after UV Exposure (Dry)

#### ASTM F1506-18

Garments for Electrical Safety in the Workplace

- ASTM F1959/F1959M-14 Arc Rating: ATPV 4.2cal/cm<sup>2</sup>
- NFPA70E CAT1: HRC1/PPE1
- ASTM6413/6413M-15 Vertical Flame Test



**BMFR821**  
Men's long sleeve crew



**BMFRBEAN84**  
Skull Beanie

**BMFRNECK85**  
Neck Warmer

**BMFRBALA82**  
Balaclava



**BMFR823**  
Men's short sleeve V



**BMFR822**  
Men's Long Johns



**BMFR866**  
Men's Boxers



TransNet NZ Ltd has made every reasonable effort to ensure the accuracy of this information and it is to the best of our knowledge correct and reliable. Under no circumstances does this constitute an assurance of any particular quality or performance and users should independently evaluate the suitability of products for their desired application. All information in this publication including pricing, drawings, illustrations, images and graphic designs are reflections of our current understanding. TransNet NZ Ltd reserves the right to make any adjustment to this information at any time. Our liability for the products outlined in this publication is set forth in our standard terms and conditions of trade. In case of any potential ambiguities or questions, please contact us for clarification.